

Upgrading Blackberry Enterprise Server 4.1.x
Steps to upgrade BES server from v4.1.x to v4.1.y – Lotus Domino

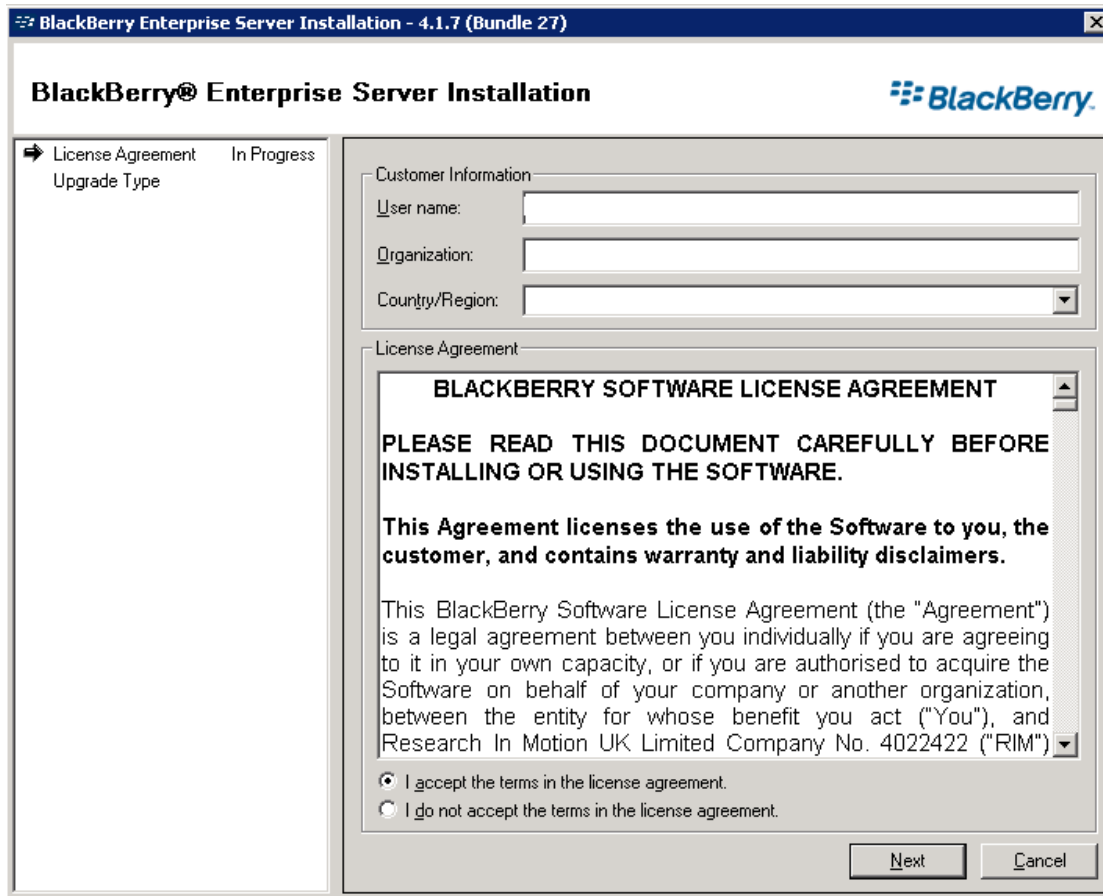
Author: Soumo Chakraborty, IT Specialist, IBM

Upgrading Blackberry Enterprise Server 4.1.5 To 4.1.7 (Bundle 27)

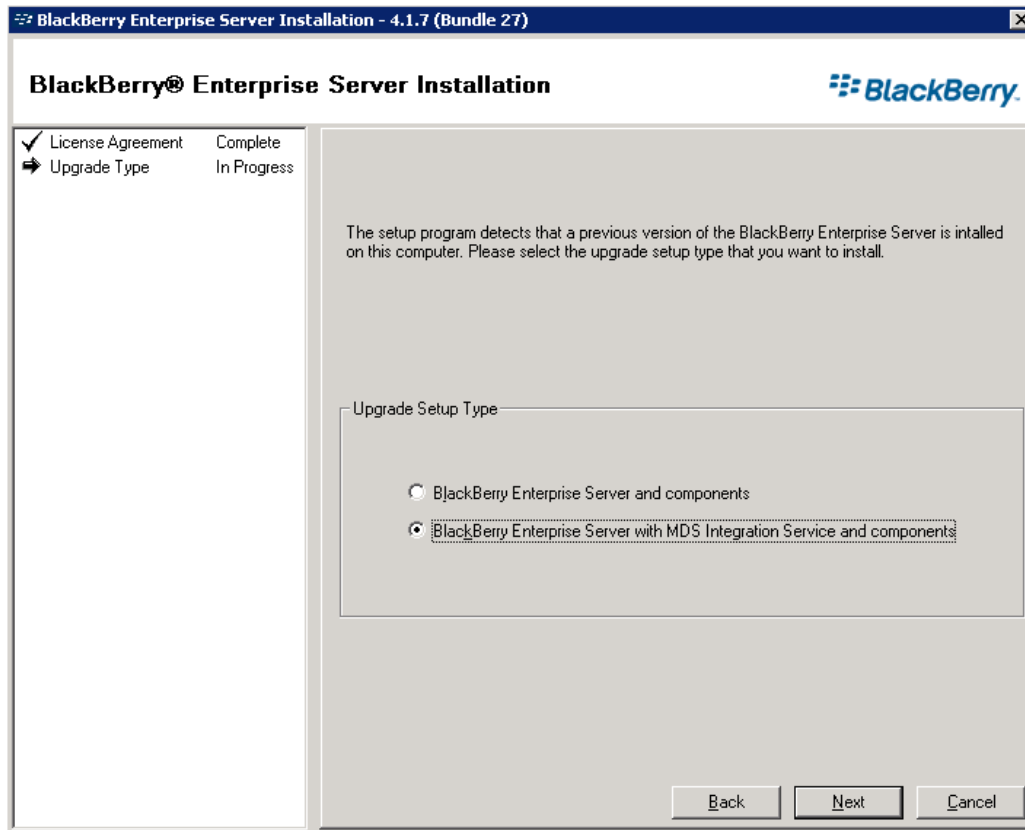
A Step by Step Guide:

This document explains the steps to upgrade your BES server running on Domino from version 4.1.x to 4.1.y. Ensure you have a full backup of all the BES related files including program files, Domino data and SQL files

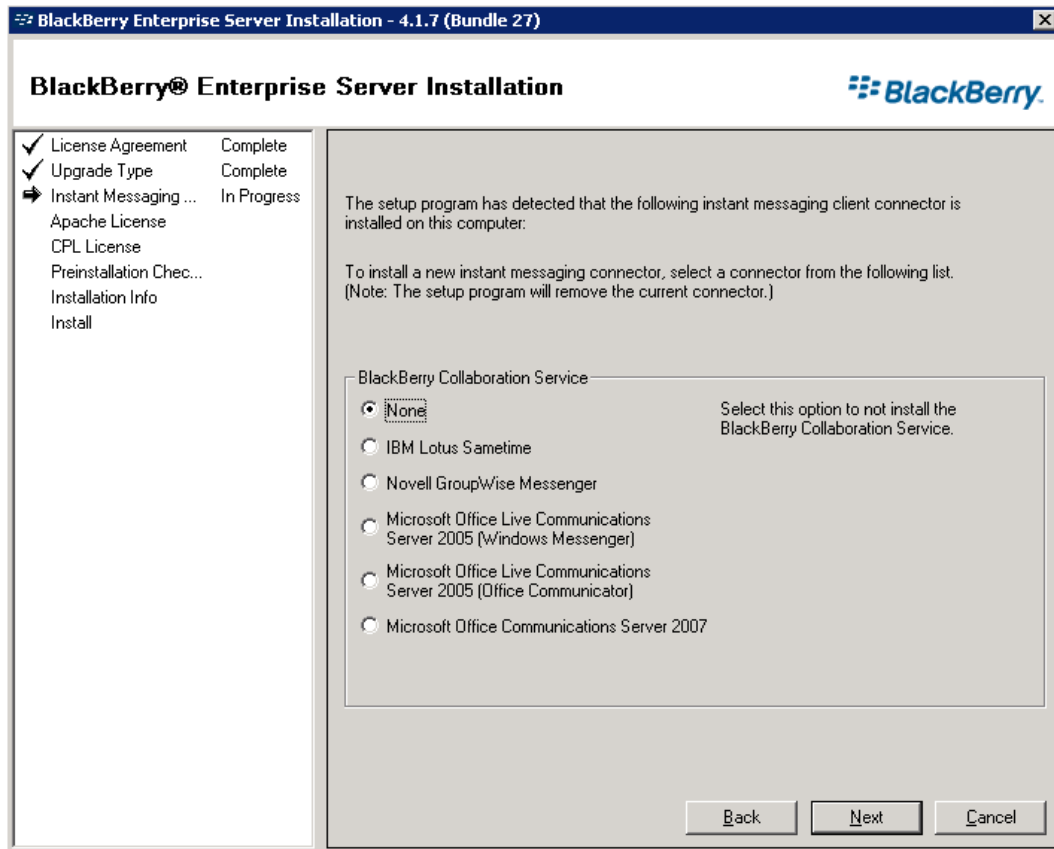
1.



1. Double click on the setup.exe file to start the installation. Accept the license agreement and click Next.



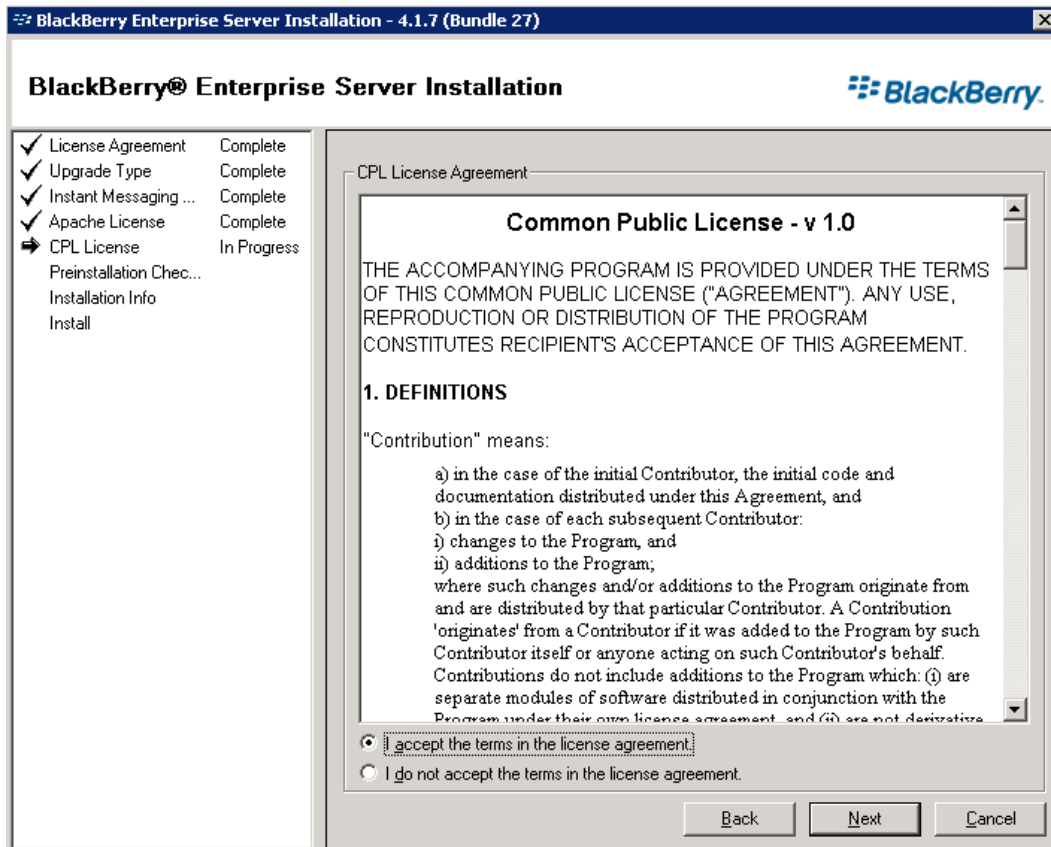
2. Choose the Upgrade Setup Type. The default mode is **Blackberry Enterprise Server and components**. If you chose require MDS Integration then choose BES with MDS Integration Service and components. Check the Windows services to see if BES MDS component is already installed for before choosing the setup. The integration service will create 2 additional SQL databases for the MDS Integration functionality.



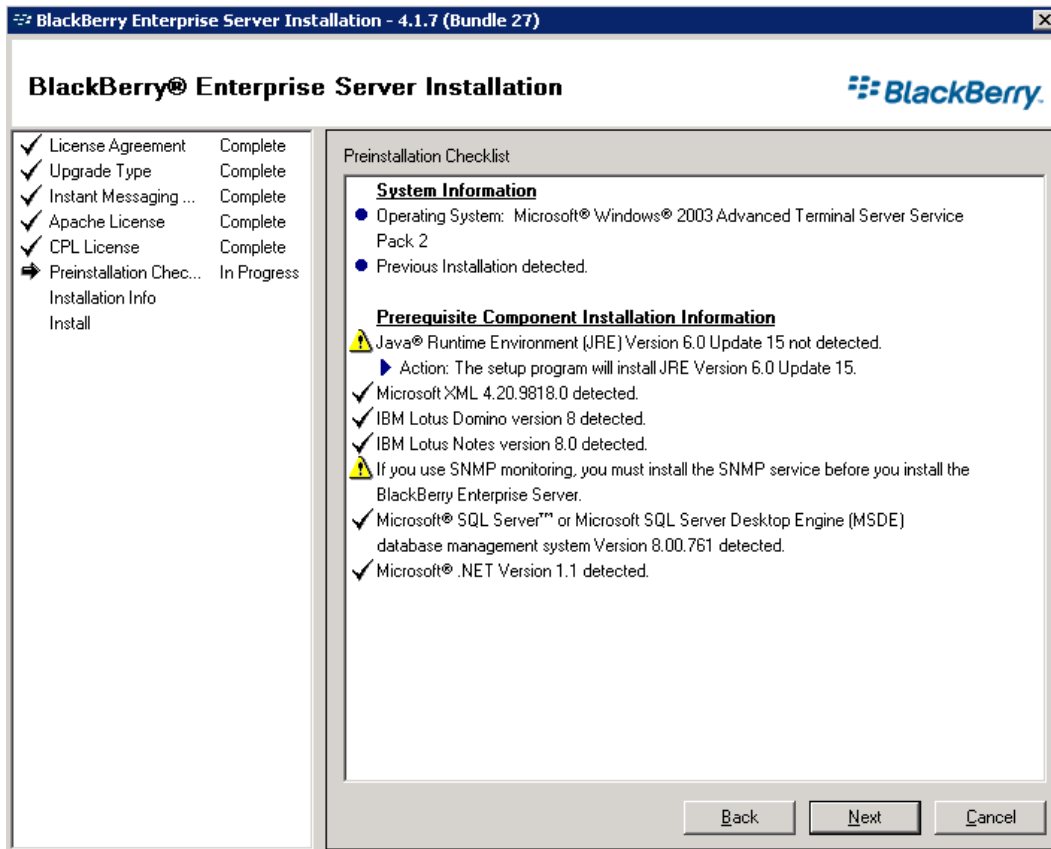
3. Choose “None” if no other collaboration service connector is installed on the BES server.



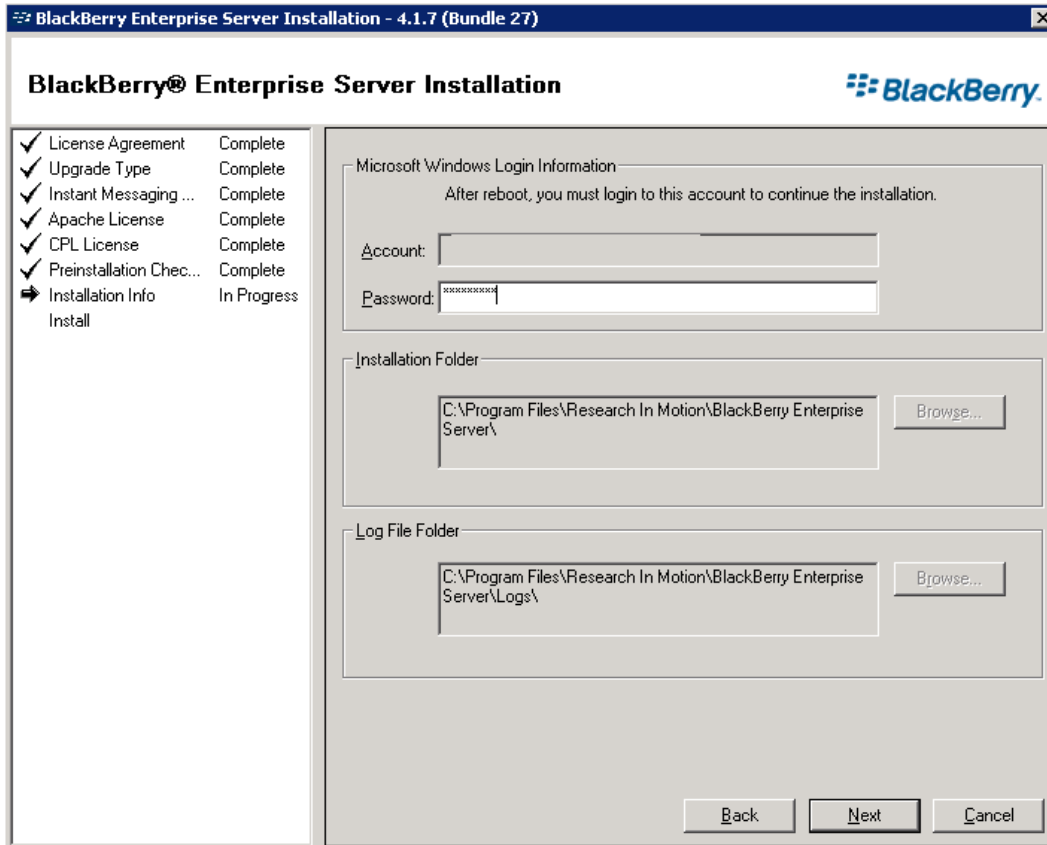
4. Accept the license and proceed Next.



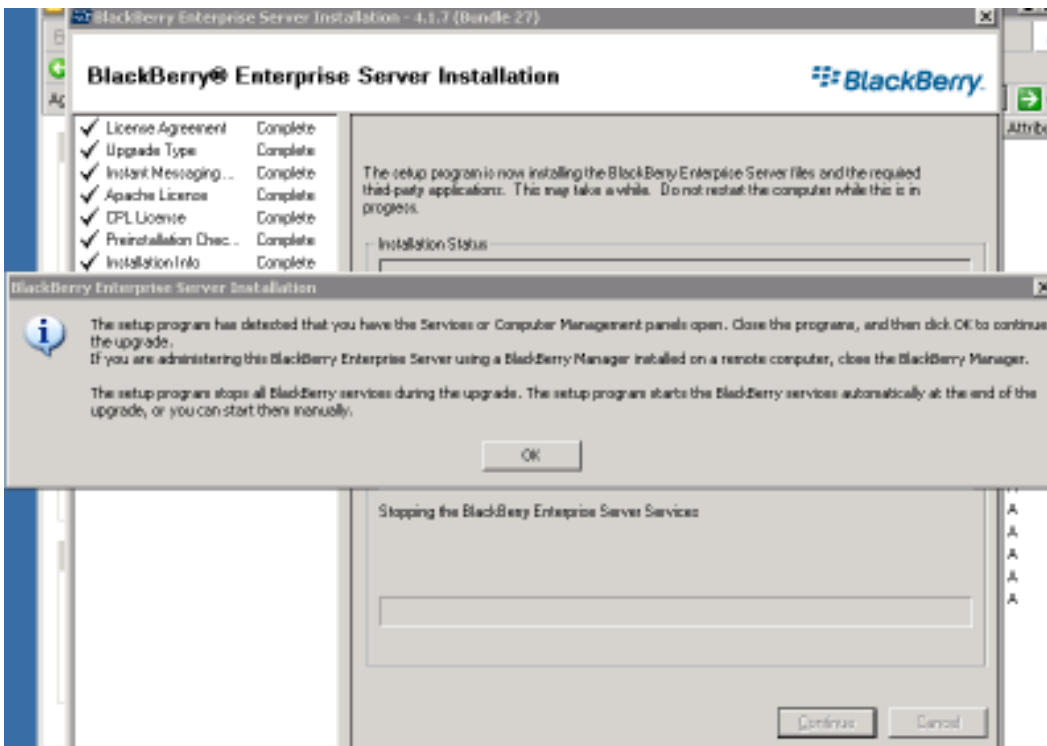
5. Accept the license and proceed Next



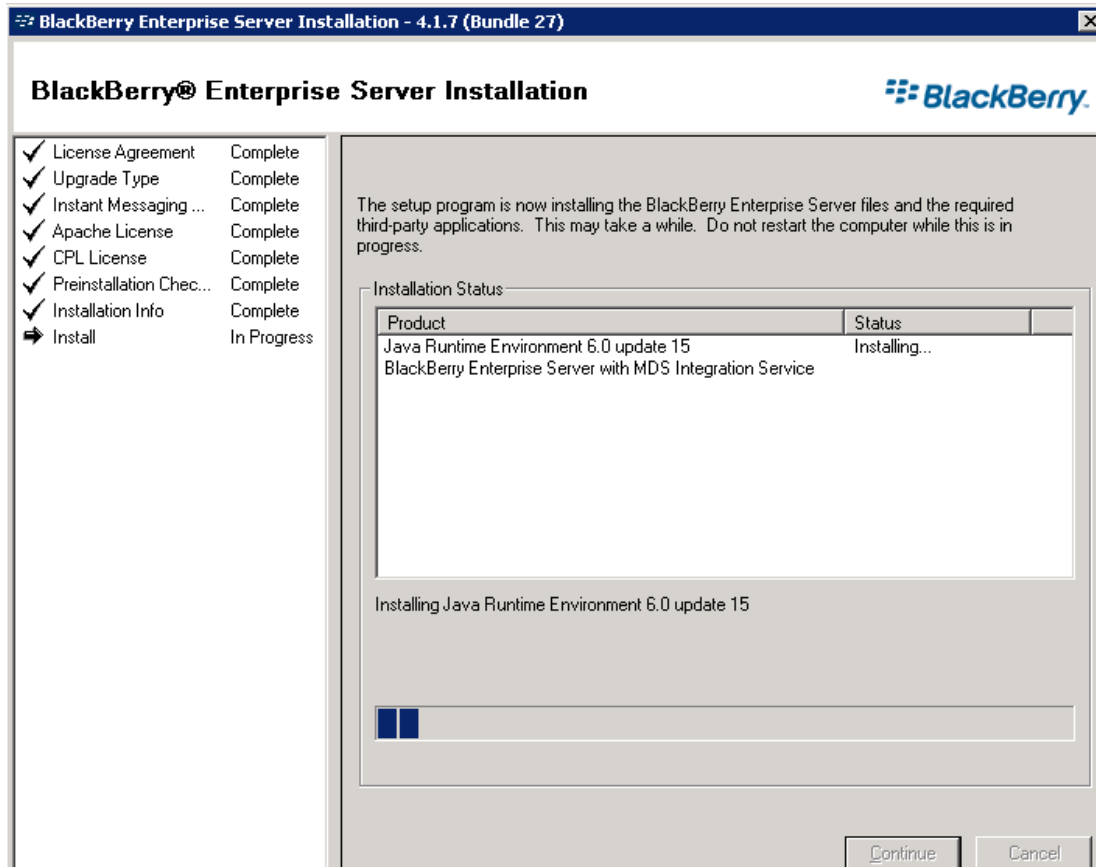
6. It shows the overall upgrade installation summary.



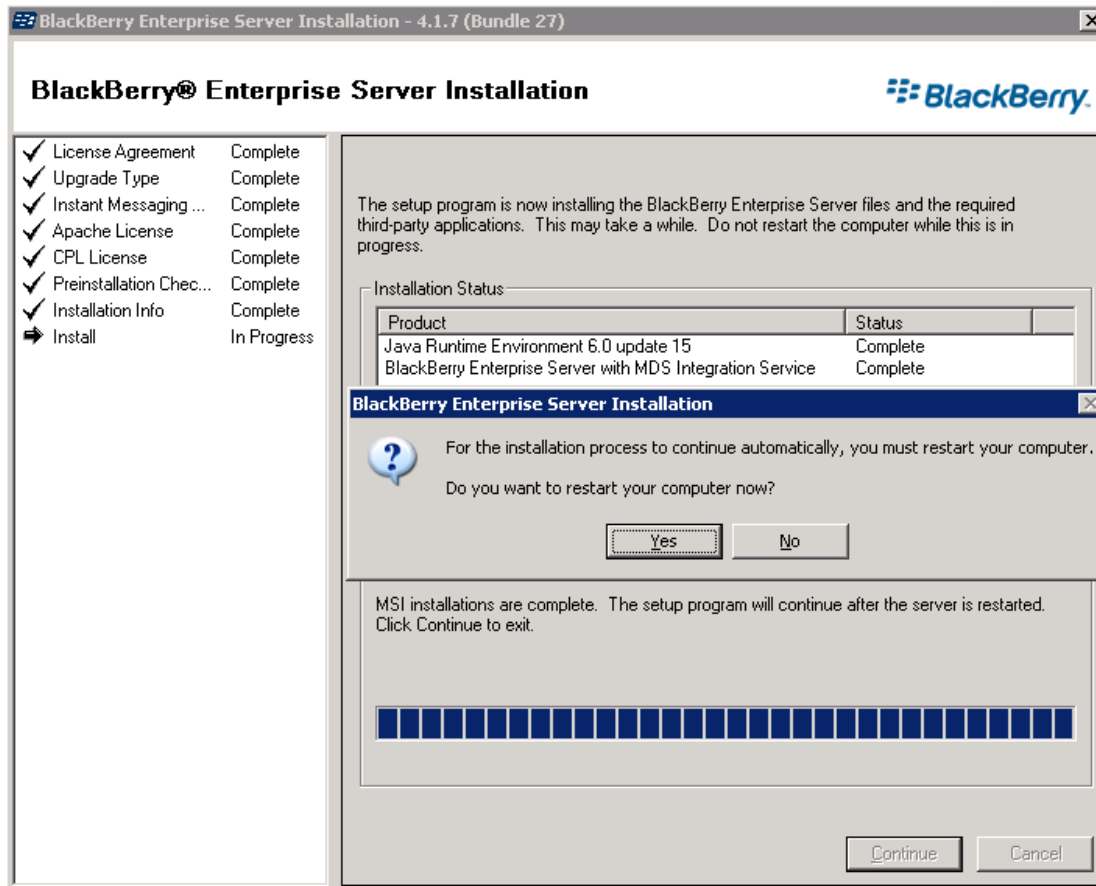
7. Provide the password to the local account password so that the installation wizard continues with the specified login credentials



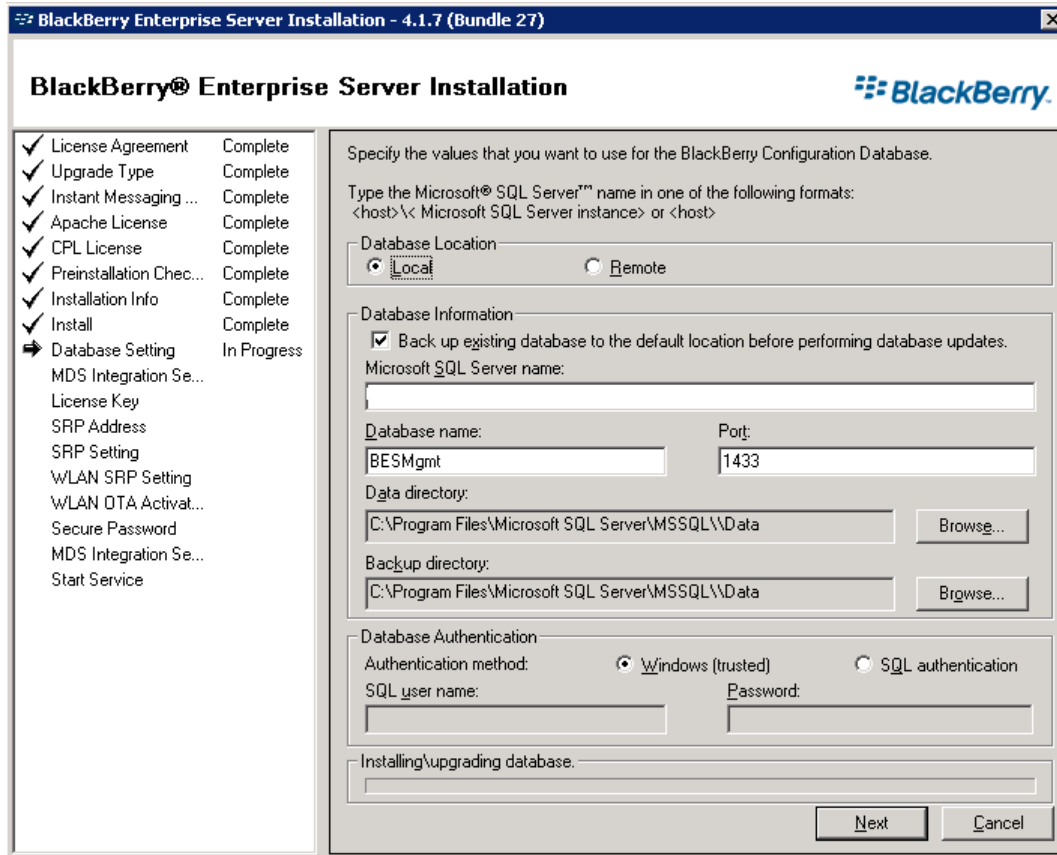
8. This is an alert message if any services panels or BES Manager is open during installation. You need to close them to proceed.



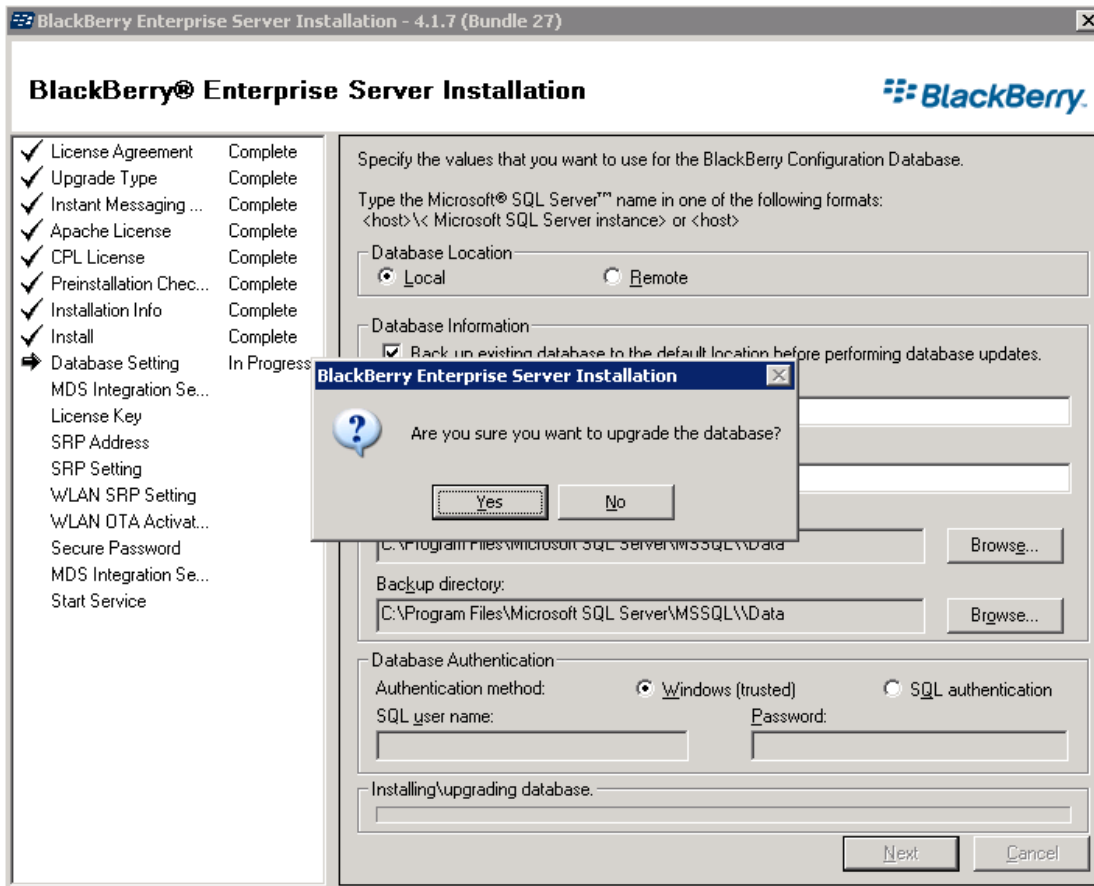
9. Shows the installation progress



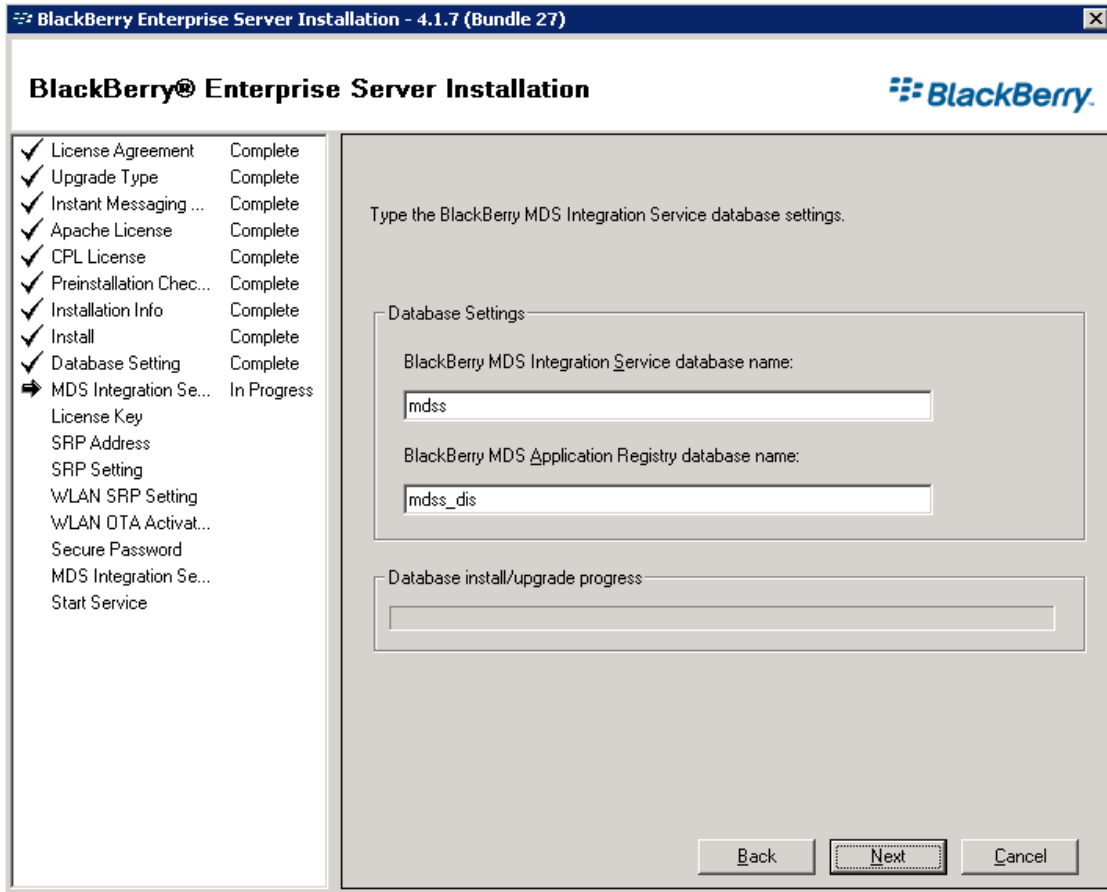
10. After the installation continues, the wizard will ask to reboot the system at OS level. Choose the option to reboot.



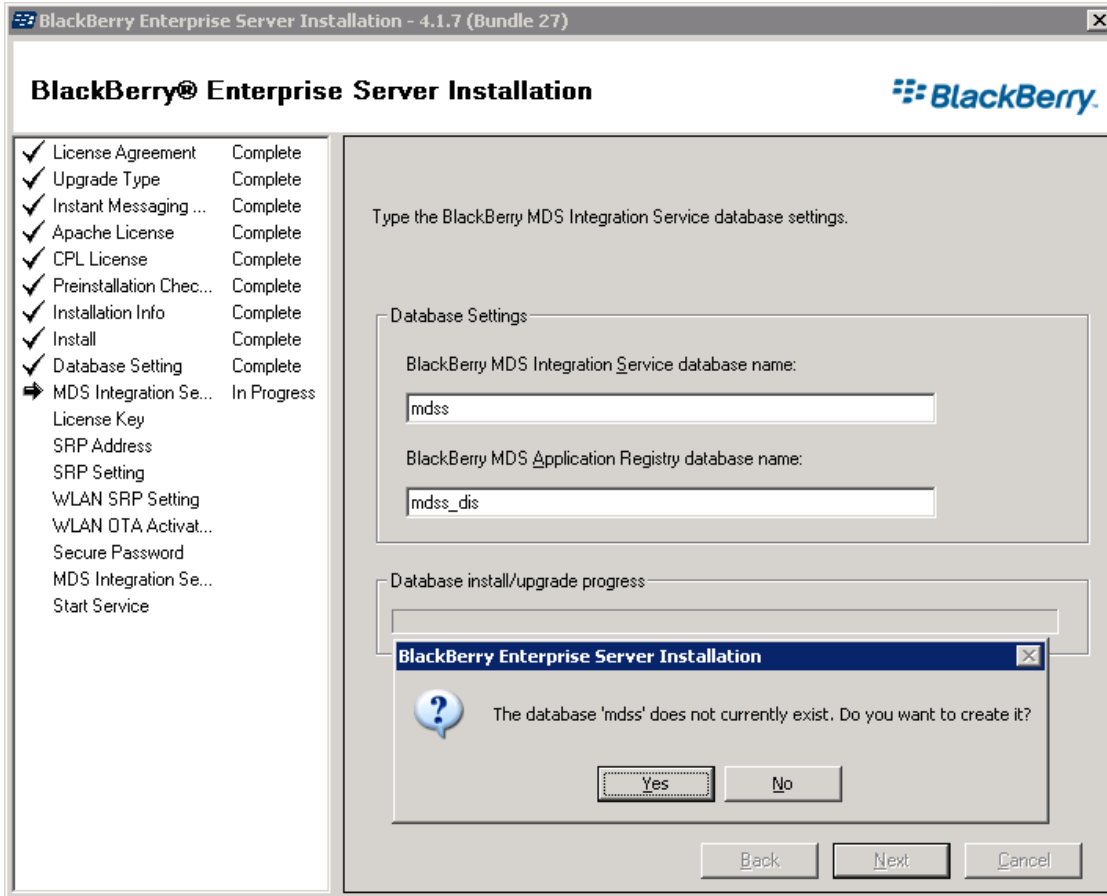
10. Post reboot, the installation continues with the Database Setting setup. Note that this will be automatically opened after the reboot. If for some issues the window does not pop-up, go to start>Programs>BES and open the wizard



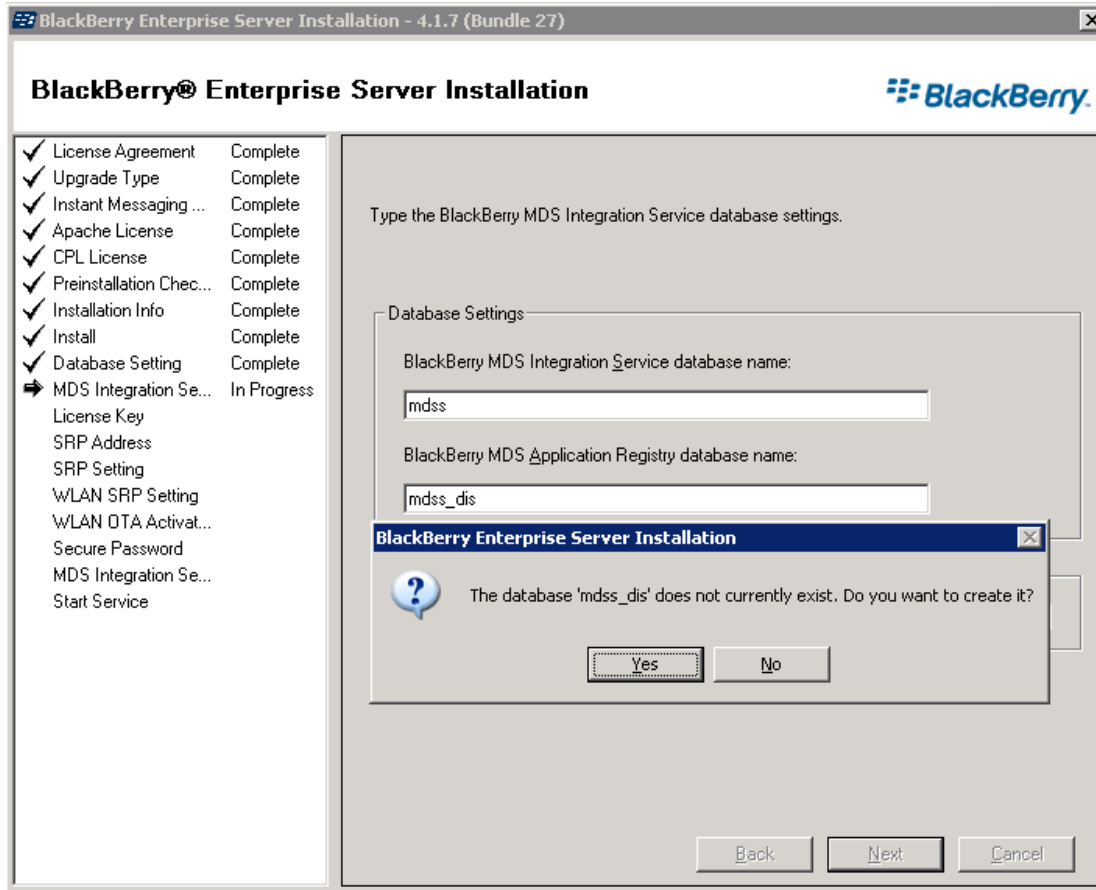
11. Choose “Yes” to upgrade the SQL database.



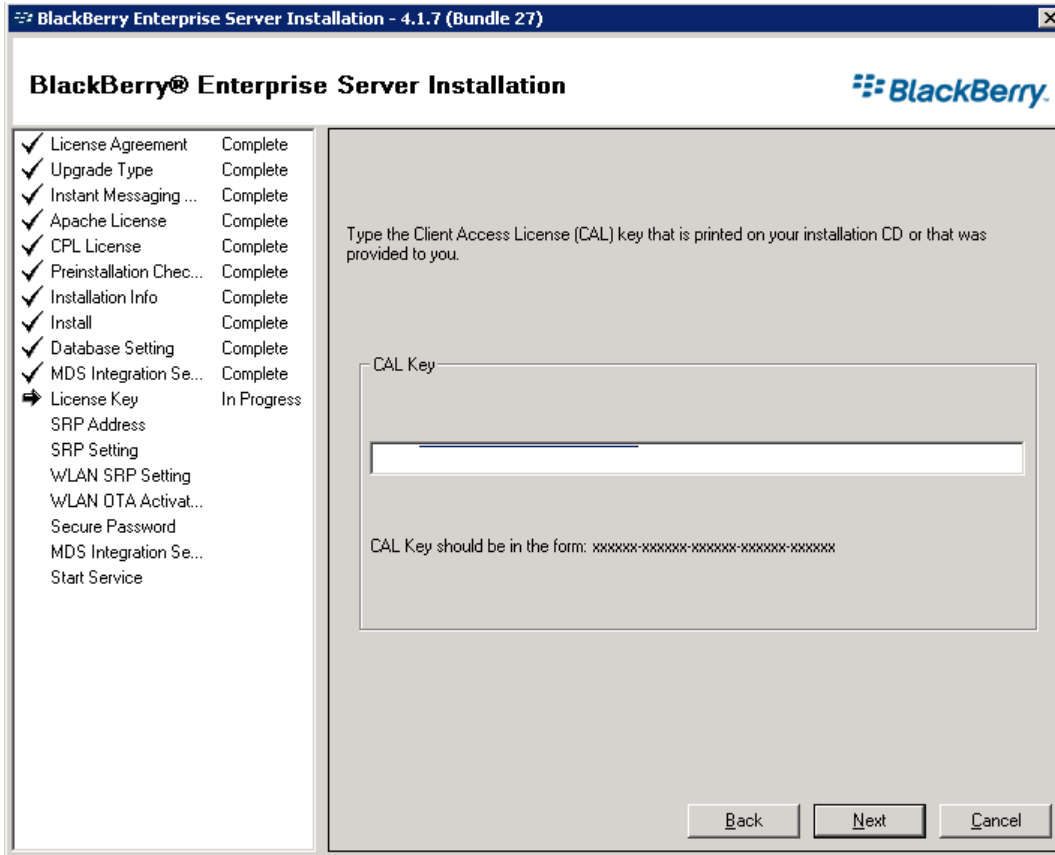
12. Shows the database upgrade progress



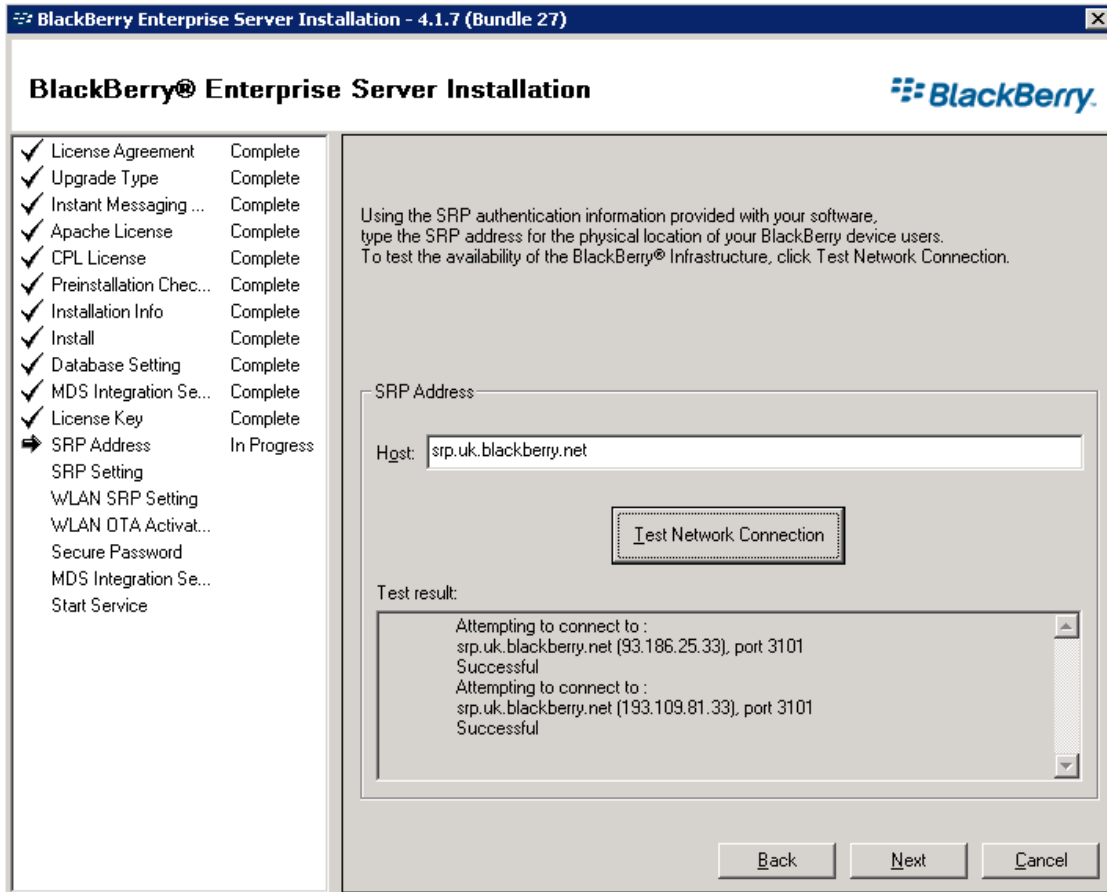
13. Specify the name of the MDS Integration service database. If the database is not present setup will create a new one.



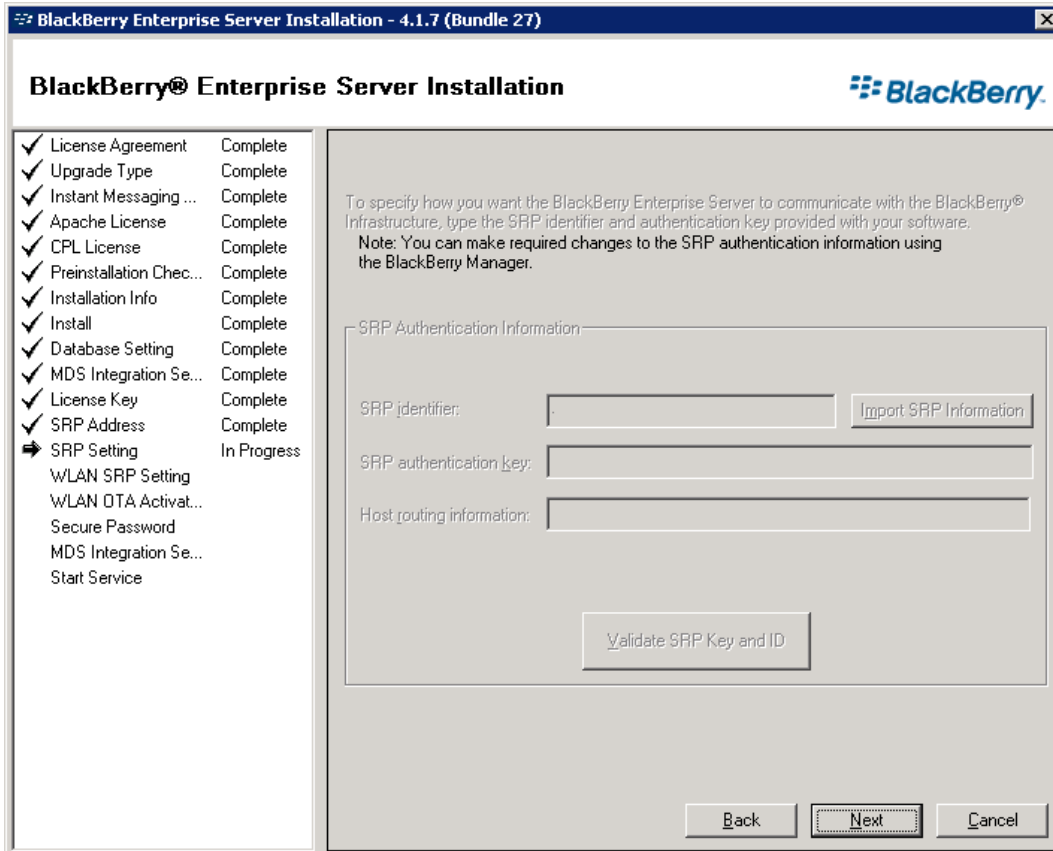
14. Specify the name of the MDS Application Registry database. If the database is not present setup will create a new one.



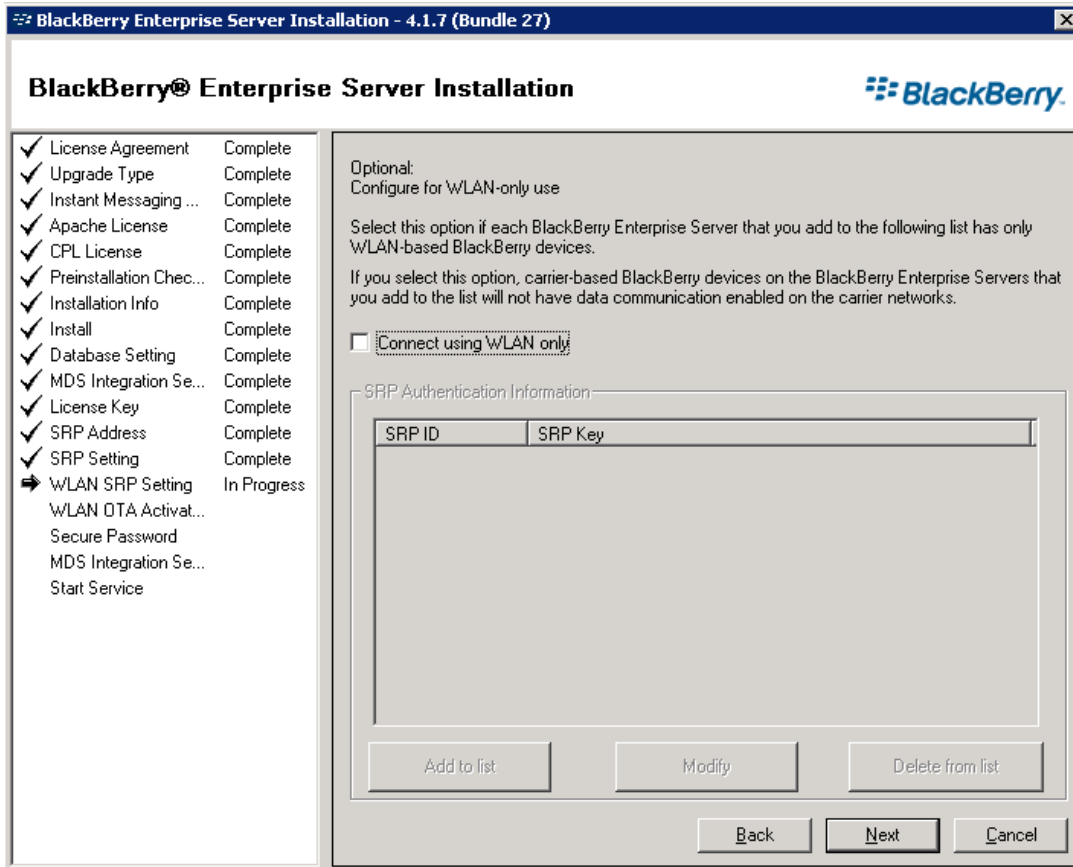
15. Specifies the CAL key. It should not be change unless you have been provided with a new one.



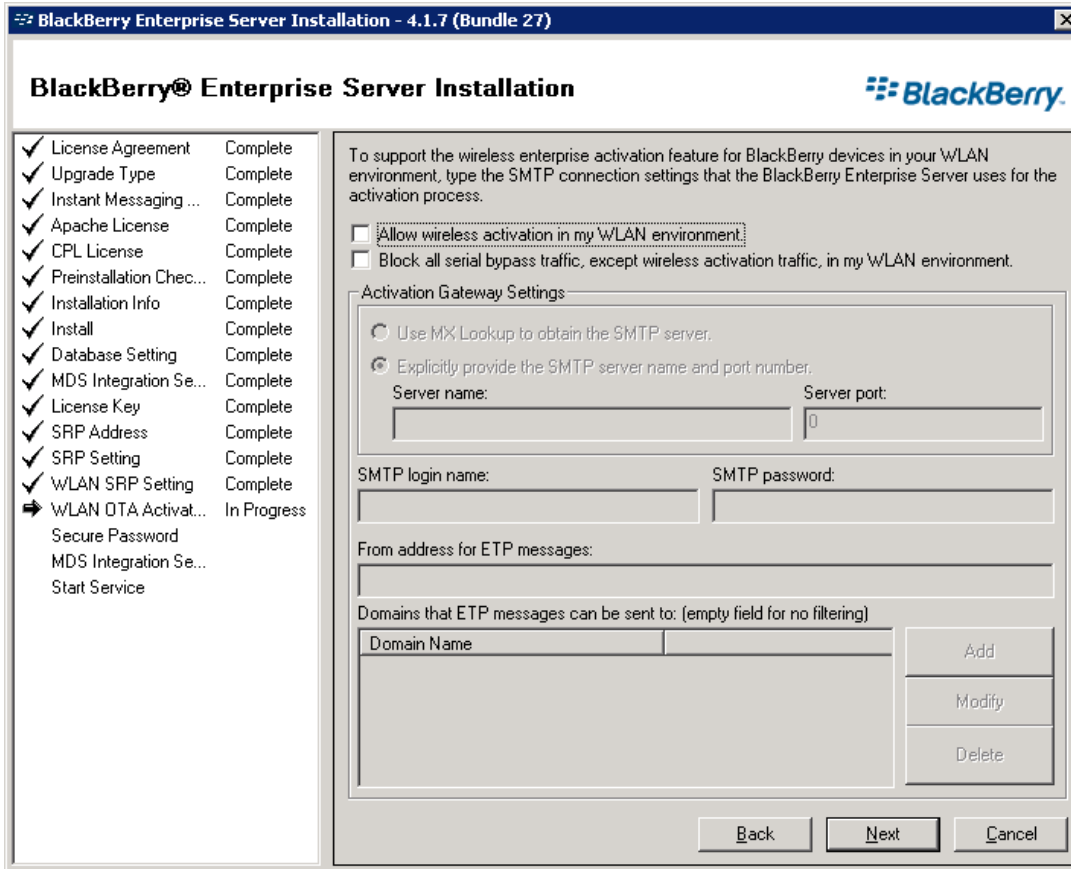
16. Specify the name of the SRP host for the BES server. Should not be changed.



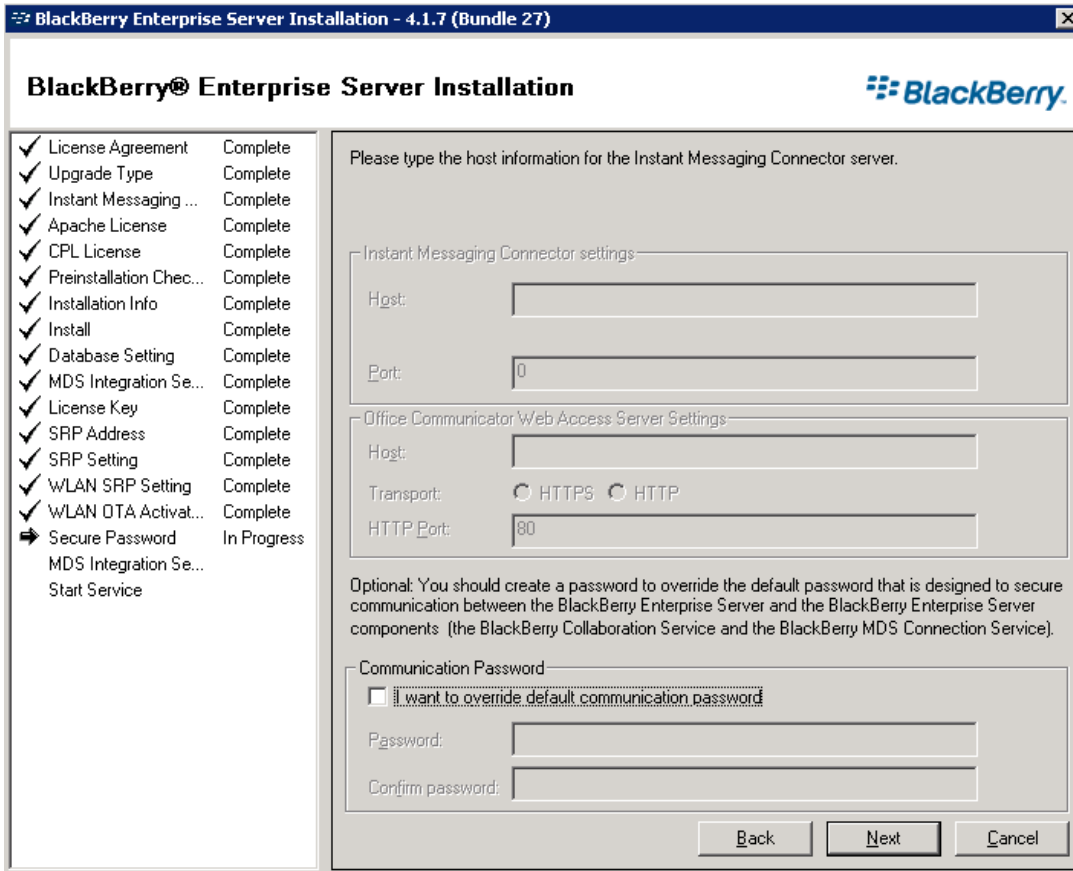
17. Shows the overall SRP information. Click Next to continue.



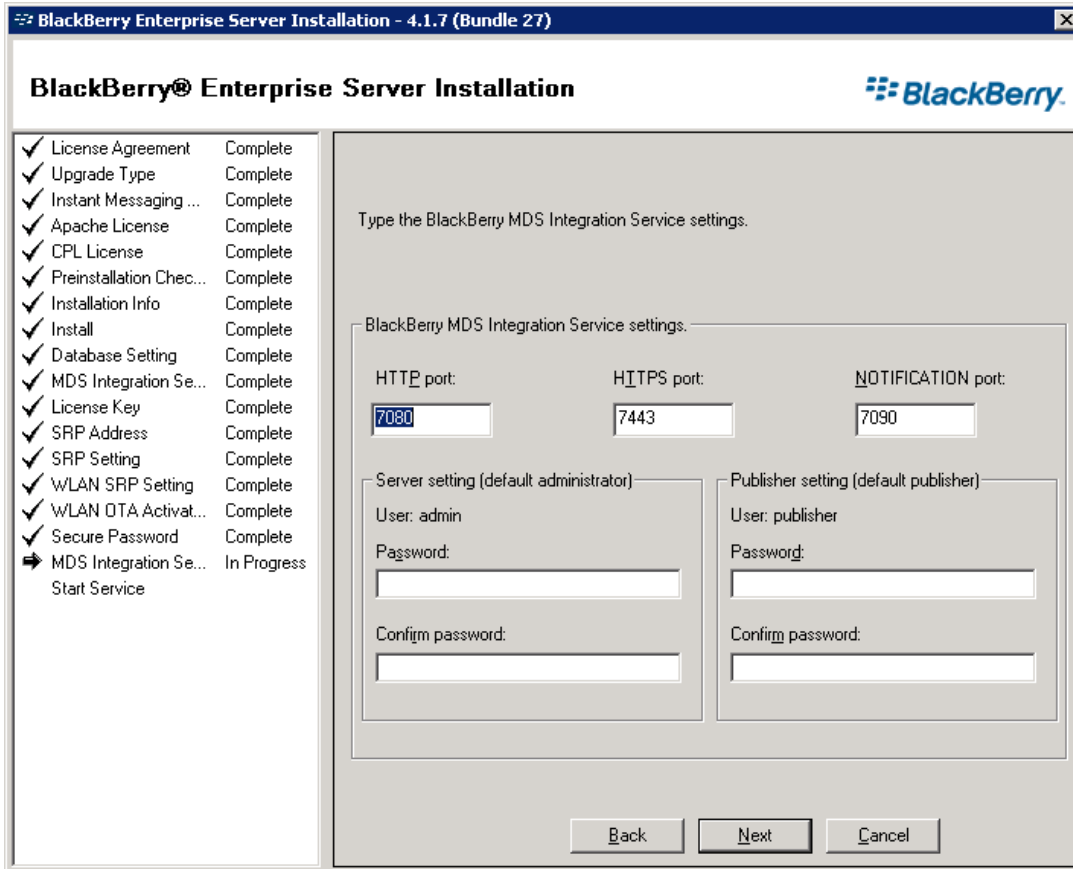
18. Select the check box if the BES has WLAN based handheld devices.



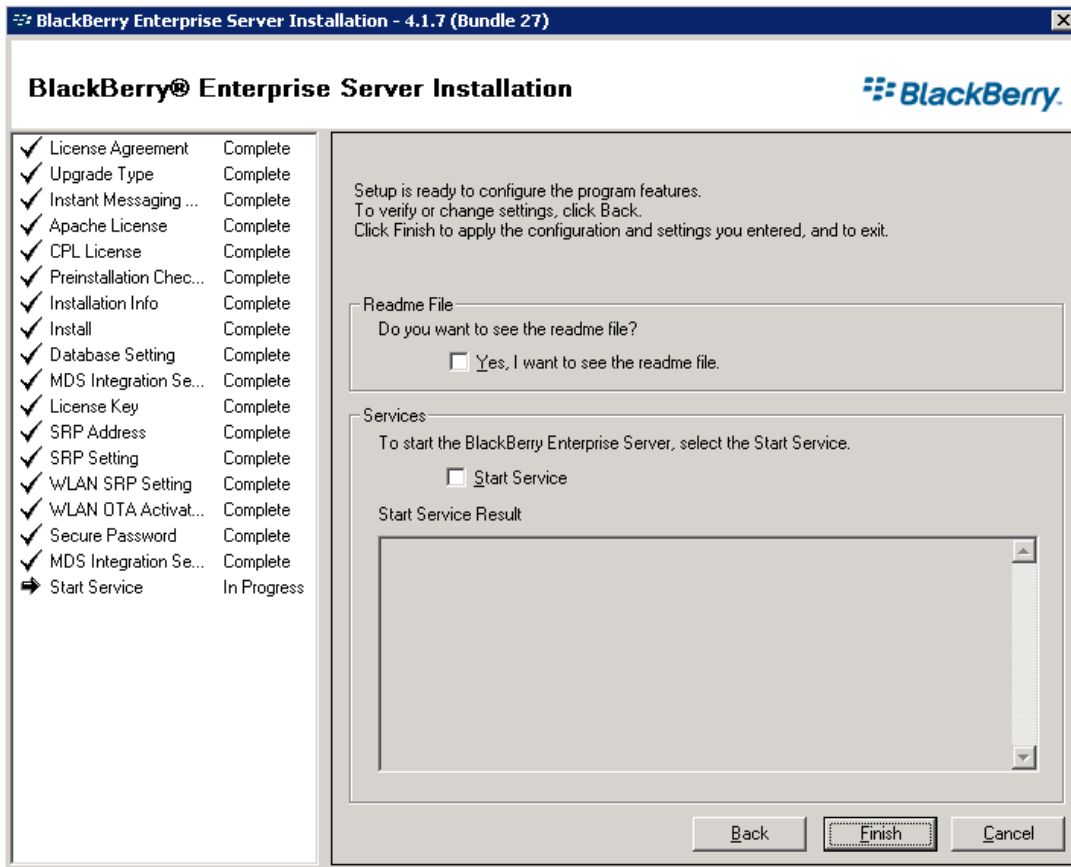
19. Should be checked based on the WLAN settings for WLAN based activation of devices



20. Create a secure password for Collaboration and MDS connection services.



21. Allows to set up password for BES Integration Services.



22. Click on the Finish button to complete the upgrade process.

Verification:

After the installation, open the Blackberry Manager and see the server details to verify the BES upgrade